

SERVICE OVERVIEW

HEALTHeOUTCOMES

WHAT IS HEALTHeOUTCOMES?

HEALTHeOUTCOMES is HEALTHeLINK's population health tool that combines clinical data from providers with regional payer claims data into one platform to drive higher-quality care, control costs and increase efficiency.

WHO SHOULD HAVE ACCESS?

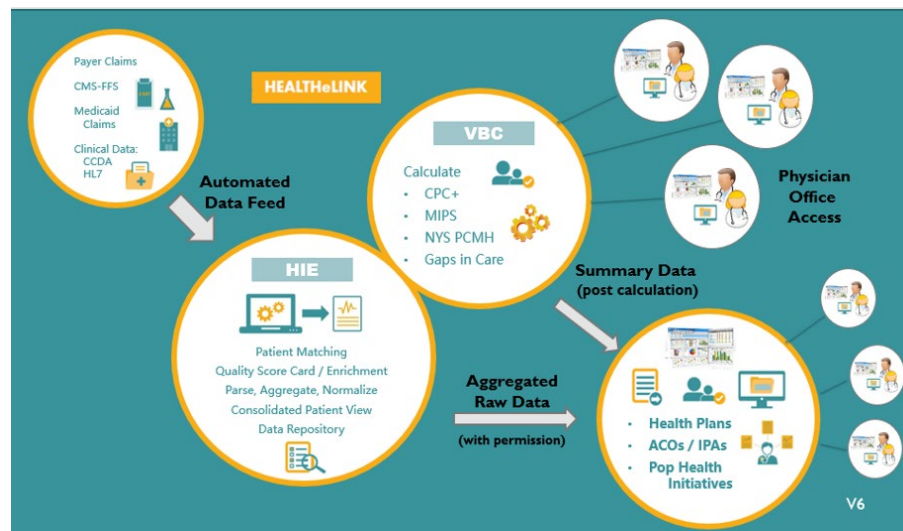
HEALTHeOUTCOMES is ideal for practices, ACOs and IPAs in the Western New York health care community that are interested in better managing cost and quality in any level of Value Based Payment (VBP) contracting.

WHAT SERVICES ARE OFFERED?

HEALTHeLINK's Population Health Team provides a range of services to clients accessing HEALTHeOUTCOMES:

- ✓ Training, enrollment, & adoption support
- ✓ Standard workflow documentation
- ✓ Custom workflow creation
- ✓ Clinical Integration Support
- ✓ Customized reports
- ✓ Access to Lunch n Learn series

HOW DOES THE DATA FLOW?



READY TO GET STARTED?

If you're ready to get access to HEALTHeOUTCOMES or if you have any questions or concerns, please contract our Population Health team at pophealth@wnyhealthelink.com.

Powered by NextGen®
HEALTHeOUTCOMES aggregates clinical data from HEALTHeLINK and claims data from patients, providers and payers to assess and provide more precise quality scores for patients for improved health across the WNY. **HEALTHeOUTCOMES** offers health care organizations a payer and health system agnostic view of their patients' health care data for better contract management and incentive opportunity.

HEALTHeOUTCOMES INSIGHT

An accurate understanding of your population helps determine which patients have the greatest need for outreach and intervention and how best to allocate resources. Gaining a view into your patient population is essential for transitioning from volume-based to value-based reimbursement.

DRIVE CHANGE WITH HEALTHeOUTCOMES

Our population health team can support your organization to access and incorporate key VBP indicators into workflows, care management and care coordination activities to maximize reimbursement.